



Optimal density determination of bouguer anomaly using fractal analysis (Case of study: Charak area,IRAN)

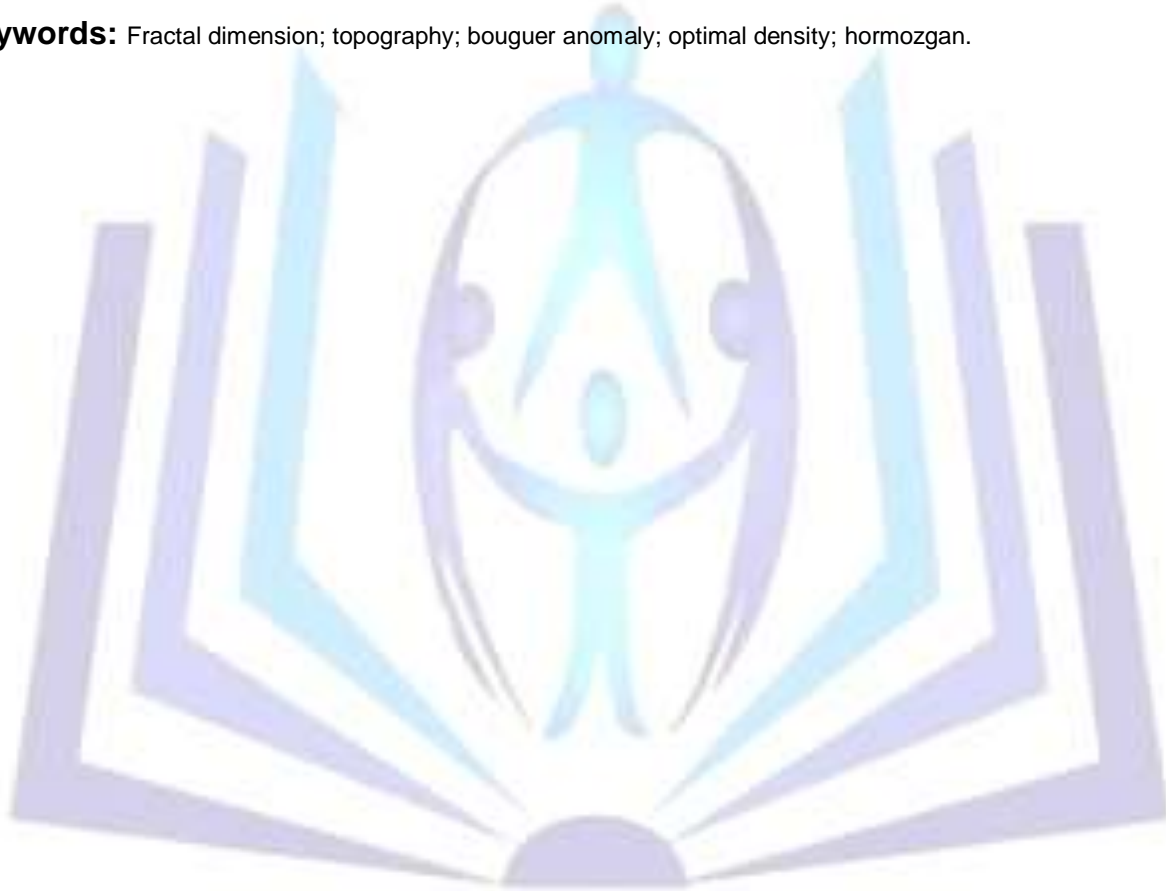
¹Hamid Reza Samadi

¹PH.D in geophysics, Ardestan Branch, Islamic Azad University, Ardestan, Iran
H_samadi379@yahoo.com

ABSTRACT

In exploration geophysics the main and initial aim is to determine density of under-research goals which have certain density difference with the host rock. Therefore, we state a method in this paper to determine the density of bouguer plate, the so-called variogram method based on fractal geometry. This method is based on minimizing surface roughness of bouguer anomaly. The fractal dimension of surface has been used as surface roughness of bouguer anomaly. Using this method, the optimal density of Charak area insouth of Hormozgan province can be determined which is $2/7 \text{ g/cm}^3$ for the under-research area. This determined density has been used to correct and investigate its results about the isostasy of the studied area and results well-coincided with the geology of the area and dug exploratory holes in the text area.

Keywords: Fractal dimension; topography; bouguer anomaly; optimal density; hormozgan.



Council for Innovative Research

Peer Review Research Publishing System

Journal: Journal of Advances in Mathematics

Vol 2, No1

editor@cirworld.com

www.cirworld.com, member.cirworld.com

INTRODUCTION

The word fractal is derived from the Latin word 'fractus' which means an irregularly broken and ground rock. It was brought up in 1975 for the first time by Benoit B. Mandelbrot. In recent years, Mandelbrot's brownian fractional surfaces have attracted a lot of attention because of their noticeable similarity to topography (Mandelbrot, 1975, Good Child, 1980, 1982, Fournier, 1982). Observing shapes in the nature, it is concluded that Euclidean geometry is not able to state and explain natural complex and apparently irregular shapes. In Euclidean geometry dimension is an integer such as one, two and three. As a consequence, Euclidean geometry is able to explain one, two, three and higher dimensional phenomena. The other observation is not to consider dimension of phenomena and events to be integer. In addition, we accept that dimension can be changed continuously from zero to one, one to two, two to three etc. For example, if a line is of dimension one and a plate is of dimension two, a dimension between one and two can be attributed to a hundreds of times broken line in accordance with intensity of breaks in the figure produced.

Fractal Method(Variogram)

Variogram method is widely used to identify dimension of fractal. Taking a large sample of couples of points (with different positions and distances) along with a profile and calculating the difference among their values, fractal dimension is easily obtained by drawing completely logarithmic graph of variance with respect to distance growth and calculating graph slope. Using this method, optimal density of the area can be achieved

Geology of area

The considered area lies between longitudes 53° and 54' to 54° and 24' east and latitude 26° and 43' to 26° and 56' north. This area is spread out to Lavaran from the east, to Dehno Maragh and Bahmani from the north, Kalat and Mazra'e Jobran from the west and to Persian Gulf from the south. From a geological point of view and considering partitioning Iran, this under-research area is in Zagros area covering north parts of Bandar Abbas to the west of Lenge port. Districts in this area belong to the end of mountains in south west of Zagros which is made up of two sub-areas of high Zagros and jagged Zagros. The main difference between these two sub-areas in the related part of Hormozgan province is mostly of structural differences, but taking sequences of stones into account, they do not differ.

Methodology:

Calculations on the data of complete bouguer anomaly of the studied area made by surface Variogram method are as follows. Firstly, a point in the area with identified longitude and latitude is considered as center and a circle, centered at this point with the largest possible radius to draw, is drawn to include data as much as possible. This maximum distance is divided to 30 equal groups. Then, variance of bouguer data difference for each group is calculated and its logarithm where Z_p and Z_q are surface values in the points q and p, d_{pq} horizontal difference among the points and H is equal to (3-D). Drawing logarithm of variance of differences caused by local complications of the surface with respect to logarithm of is drawn with respect to logarithm of each group differences (Aronson, 1984). After investigating the graph, points which are supported by Earth's rigid crust and show fractal feature are selected and then we fit the regression line of least squares with them. The slope of this straight line which satisfies the formula $y=mx+b$ demonstrates fractal dimension of line,

$$(1) \quad E \{(Z_p - Z_q)^2\} = K(d_{pq})^{2H}$$

distance among the points results in a graph which the existence of a linear relation along the domain implies self-similarity along that domain, and its fractal dimension is gained by slope b of a drawn line in domain point. $D=3-b/2$.

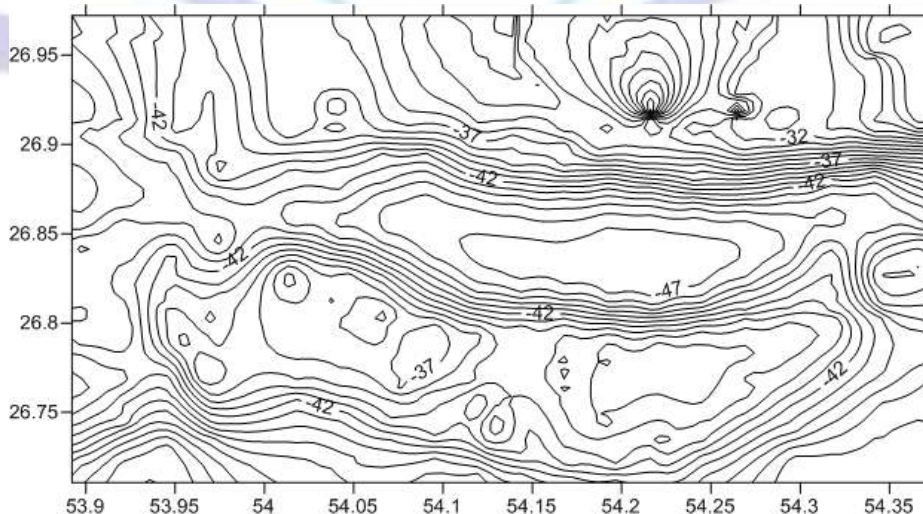


Figure (4): Contour map of complete bouguer anomaly with density $(2.3)g/cm^3$ and level line differences of 1 (m gal)

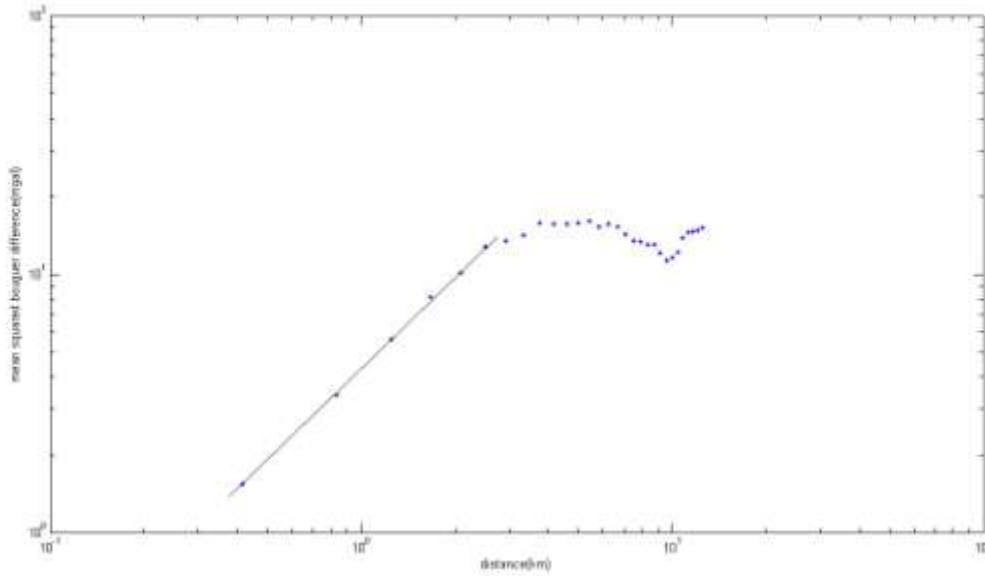


Figure (2): Complete regression line of bouguer anomaly of the area with fractal dimension (2.42)

Identification scheme of optimal density in the area:

In this section, to reduce the dimension of surface roughness of bouguer anomaly, optimal density is determined, and to achieve this goal, firstly, complete data of bouguer anomaly of the area with different density should be calculated. Then, fractal dimension of each new obtained data series is calculated using mentioned method and draw the results with respect to their density (Thorarinsson, 1988). In the obtained graph, the minimum shown dimension has the best density which is $(2.7g/cm^3)$ for the under-research area

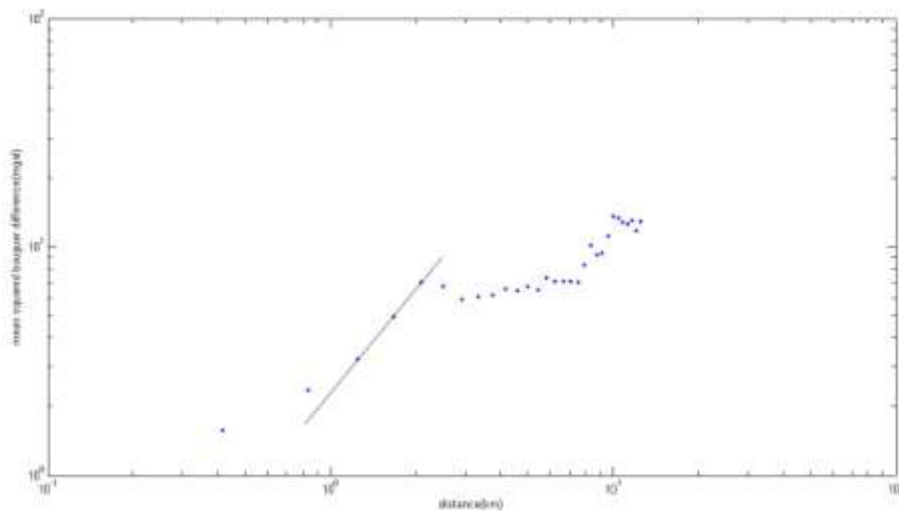


Figure (3): Complete regression line of bouguer anomaly of the area with optimal density $(2.7g/cm^3)$ with fractal dimension (2.24)

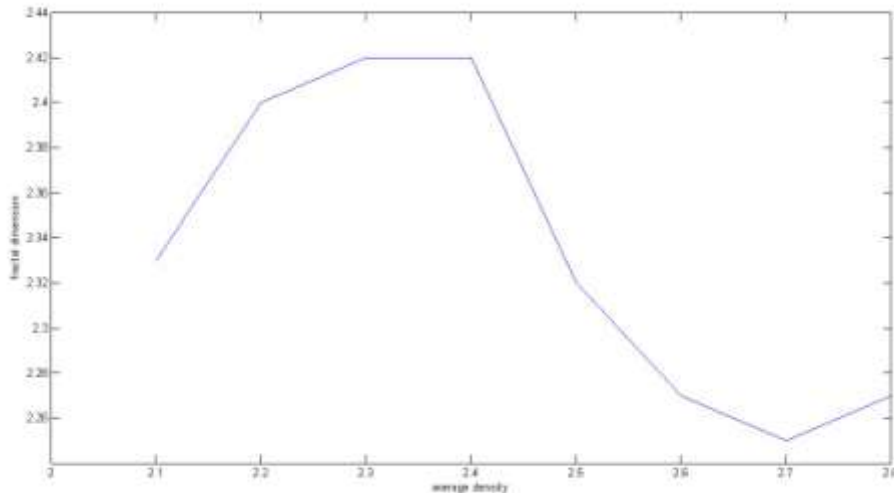


Figure (4): Illustrating determination of optimal density of the area

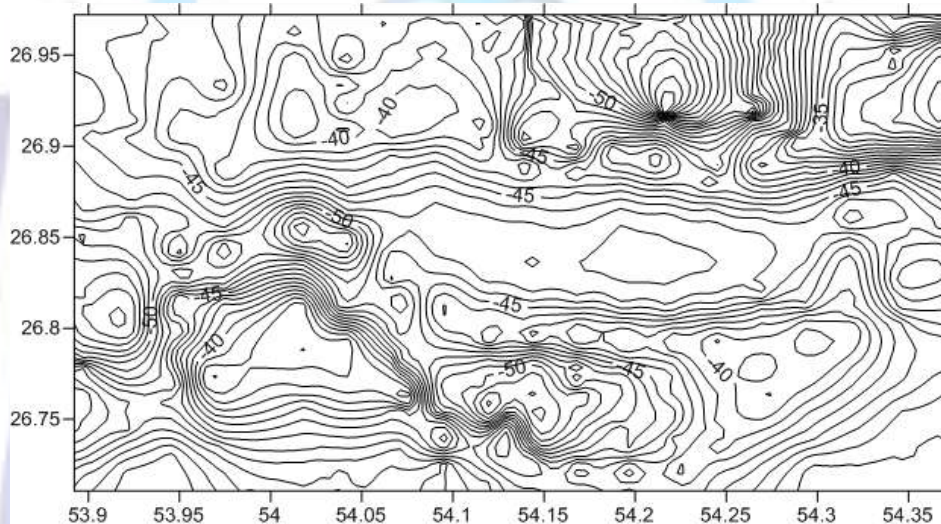


Figure (5): Contour map of complete bouguer anomaly with density $(2.7)g/cm^3$ and level line differences of 1 (m gal)

RESULT and DISCUSSION

Usage of small and large amount of bouguer density in the bouguer plate and topography correction makes extra effect of topography on the results of bouguer anomaly. Supposing that gravitational field has usually less roughness in comparison with topography, we determine bouguer density with minimizing surface roughness of bouguer anomaly. The amount of this roughness has been determined by dimension of surface fractal.

- Windows in Mishan formation (about 54.03, 26.86) which because of erosion caused displacement of Asmari limestone and is distinguishable in the contour map of topography of the area, in the contour map of bouguer anomaly with density of 2.7 is well-represented more clearly.

- In the center inclined to the west (54.03, 26.86) in the contour map with density of - In the west of the area (about 53.92, 26.81) the anomaly caused by salty dome in contour map with density of 2.7 is determines more clearly and more definite

- In the north of the area (54.10, 26.95) the salty dome in contour with density of 2.7 with respect to contour map with density of 2.3 is more clearly distinguishable.

REFERENCES

- [1] Aronson, peter B, Mark, David M. 1984, Scale - Dependent Fractal, dimensions of topographic surfaces: Math. Geol., 16, 671, 683.
- [2] Fourier A.,fussell d.,1982,computer bendering of stochastic models,comm.acm,25,6,371-384.
- [3] Goodchild m.f.,1982,the fractional Brownian process as a terrain simulationmodel proceedings, thirteenth annual pittsburg conference on modelingandbimulation,vol13,1133-1137.



- [4] Mandelbrot, b.b., 1957, how long is the coast of Britain? statistical self similarity and fractional dimension: science, 156, 636-638.
- [5] Thorarinsson, f., Magnusson, s.g., 1988, directional spectral analysis and filtering of geophysical maps, geophysics, 53, 1587-1591.

