



## STABILITY-INDICATING METHODS FOR THE DETERMINATION OF GEMIFLOXACIN IN PRESENCE OF ITS ACID DEGRADATION PRODUCT(S)

Ezzat M. Abdel-Moety<sup>1</sup>, Amr M. Badawey<sup>2</sup>, Hebatallah M. Essam<sup>3</sup>, Fatma M. AboulAlamain\*<sup>4</sup>.

<sup>1</sup>Cairo University, Faculty of Pharmacy, Analytical Chemistry Department, Kasr el Aini St, Cairo, Egypt.  
eamoety@gmail.com

<sup>2</sup>Future University, Faculty of Pharmaceutical Sciences and Pharmaceutical Industries, Pharmaceutical Chemistry Department, 1211, Cairo, Egypt.  
amrbadawey2014@hotmail.com

<sup>3</sup>Cairo University, Faculty of Pharmacy, Analytical Chemistry Department, Kasr el Aini St, Cairo, Egypt.  
Heba\_essam80@hotmail.com

<sup>4</sup>The Holding Company for Biological Products & Vaccines VACSERA, Giza, Egypt.  
Corresponding author E-mail: falamine2004@yahoo.com

### ABSTRACT

Brilliant, valid and simple five UV spectrophotometric stability indicating techniques are adopted for the determination of Gemifloxacin (GEM) in presence of its acid degradation products over a concentration range of 2-12  $\mu\text{g mL}^{-1}$ . The first method is an application of the first derivative (<sup>1</sup>D) spectrophotometry, that allows the determination of GEM without interference of its acid degradation products at zero crossing wavelength (254.6 nm). The second method depends on the first-derivative of the ratio spectra spectrophotometry (<sup>1</sup>DD) for determination of GEM in presence of its acid degradation products at a maximum of 273.0 nm and a minimum of 284.0 nm, While the third dual wavelength method offers a superior stability indicating procedures for the determination of GEM in the zero order spectra at the wavelength pair of 271.8 nm and 325.0 nm. The fourth method is the ratio difference one, with the advantages of minimal data processing and wide range of application. It is applied for the analysis of intact drug in presence of its acid degradation products by measuring the difference in the peak amplitude at the ratio spectra at 355.0 nm and 270.0 nm. The last method is based on the quantification of GEM through the bivariate calibration at 255.0 nm and 277.0 nm by adopting simple mathematic algorithm that provides simplicity and rapidity.

**Keywords:** Gemifloxacin; first derivative; derivative ratio; dual wave length; bivariate calibration; ratio difference.

## Council for Innovative Research

Peer Review Research Publishing System

**Journal:** Journal of Advances in Chemistry

Vol 11, No. 6

[editorjaconline@gmail.com](mailto:editorjaconline@gmail.com), [www.cirjac.com](http://www.cirjac.com)



## 1. INTRODUCTION

Gemifloxacin; chemically is 7-[(3-(Aminomethyl)-4-(methoxyimino)-1-pyrrolidiny]-1-cyclopropyl-6-fluoro-1,4-dihydro-4-oxo-1,8-naphthyridine-3-carboxylic acid<sup>[1]</sup>, **Figure (1)**. It is an oral broad-spectrum third generation fluoroquinolones antibacterial agent used in the treatment of acute bacterial exacerbation of chronic bronchitis and mild-to-moderate pneumonia. It is indicated for the treatment of respiratory and urinary tract infection<sup>[2]</sup>. Gemifloxacin (GEM) is rapidly absorbed from the gastrointestinal tract with an absolute bioavailability of about 71%. A peak plasma concentration is occurring 0.5 to 2 hours after an oral dose. It undergoes limited hepatic metabolism and has an elimination half-life of about 7 hours. It is excreted as unchanged drug and metabolites in the faeces and urine<sup>[3]</sup>.

Several analytical techniques were widely described for the analysis of GEM. Some spectroscopic methods with different approaches including colorimetric<sup>[4-7]</sup>, and fluorimetric<sup>[8]</sup> procedures were developed. GEM can also be determined by LC-tandem MS<sup>[8-12]</sup> and thin layer chromatography<sup>[13]</sup>. Different high performance liquid chromatographic [HPLC] methods were used for analysis of GEM in variable sample matrices<sup>[14-25]</sup>. But according to the literatures in hands, there is no direct stability indicating spectrophotometric method was developed for GEM quantification.

## 2. EXPERIMENTAL

### 2.1. Instrumentation

Dual-beam UV-visible spectrophotometer, UV-1650 PC (Shimadzu) with matched 1 cm quartz cells, connected to an IBM compatible personal computer (PC), software is UV Probe version 2.21

### 2.2. Materials and reagents

- **Gemifloxacin (GEM) pure sample**, HIKMA Pharma, Giza-Egypt. Its purity was assessed to be  $99.61 \pm 0.579\%$  ( $n = 6$ ) according to a reported spectrophotometric method<sup>[4]</sup>.
- **Factive® tablets**, each tablet claimed to contain 426.39 mg gemifloxacin mesylate equivalent to 320 mg gemifloxacin, batch No.(BN) 005, manufactured by HIKMA Pharma S.A.E-Egypt, under license of LG life science, Ltd, Seoul-Korea.
- Methanol: Spectroscopic grade (E. Merck, Darmstadt- FRG).
- Sodium hydroxide, 4M aqueous solution and hydrochloric acid, 3M aqueous solution (Adwic, Cairo-Egypt).

### 2.3. Standard solutions

#### 2.3.1 Standard solution of Gemifloxacin

A standard stock solution of GEM was prepared by transferring accurately 100 mg of pure drug into 100-mL volumetric flask, dissolving in 20 mL methanol and then the volume was completed to the mark with the same solvent to provide standard stock solution containing  $1 \text{ mg mL}^{-1}$ .

#### 2.3.2. Working solution of Gemifloxacin

GEM working solution was prepared by transferring 10 mL of the standard stock solution into 100-mL volumetric flask and then the volume was completed to the mark with methanol to obtain standard working solution containing  $0.1 \text{ mg mL}^{-1}$  of GEM, and then further dilution was applied to reach final concentration of  $10 \mu\text{g mL}^{-1}$ .

#### 2.3.3. Stock solution of acid degraded GEM

Accurately weighed 100 mg of pure GEM was transferred to a 250-mL round bottomed flask and 25 ml of 3N HCL was added, and then refluxed with continuous magnetic stirring for 10 hrs. The solution was neutralized to pH 7 with 4N NaOH, concentrated nearly to dryness and cooled to room temperature. The residue was dissolved with least amount of methanol, and then filtered, the filtrate was collected into 100 ml measuring flask and the volume was made up with methanol. Complete acid degradation of GEM was confirmed by TLC-fractionation on silica gel F 254 plates using ethyl acetate : methanol : ammonia ( 8:4:3 by volumes as a developing solvent, visualization was carried under UV-lamp 254.0 nm<sup>[14]</sup>. Then the degradation products were elucidated by mass spectrometry.

Aliquot portion of this solution was diluted with distilled water to prepare working stock solution of  $10 \mu\text{g mL}^{-1}$ .

## 2.5. Procedures

### 2.5.1. Construction of calibration curves

Accurately measured volumes of intact GEM working solution ( $0.1 \text{ mg mL}^{-1}$ ) were transferred into a series of 10-mL volumetric flasks and diluted to the mark with methanol to obtain concentrations from 2 to  $12 \mu\text{g mL}^{-1}$ . These prepared concentrations were used to construct the calibration curve for each theory as follows:



### 2.5.1.1. For $D^1$ spectrophotometric method.

The  $D^1$  spectra of each solution was recorded using  $\Delta\lambda = 4$  and scaling factor = 20. For determination of GEM in presence of its acid degradation products, calibration curve was obtained by plotting the peak amplitudes of  $D^1$  at 254.6 nm (corresponding to zero-crossing of the degradation products) versus the corresponding drug concentrations, and regression equation was computed.

### 2.5.1.2. For $(DD^1)$ spectrophotometric method.

The absorption spectra of these solutions were divided by the absorption spectrum of  $8 \mu\text{g mL}^{-1}$  of the acid degradation products (as divisors). The obtained ratio spectra were then differentiated with respect to wavelength using  $\Delta\lambda = 4$  and scaling factor = 1. The peak amplitudes at peak 273.0 nm and trough 284.0 nm were recorded for the determination of GEM in presence of its acid degradation products. The calibration curves representing the relationship between the measured amplitudes and the corresponding concentrations of the drug were constructed and the regression equations were computed.

### 2.5.1.3 For dual wave length method.

The Zero-order spectrum of each dilution was recorded against methanol as blank. The absorbance difference of GEM was measured between the selected wavelength pair (271.8 nm & 325.0 nm) for each dilution separately, and then the obtained differences were plotted against the corresponding concentrations of the drug and the regression equation was then computed.

### 2.5.1.4. For ratio difference spectrophotometric method:

The zero order spectra of the prepared concentrations of GEM were divided by the spectra of  $8 \mu\text{g mL}^{-1}$  GEM acid degradation product, the difference in the peak amplitudes at the ratio spectra was measured at 355.0 and 270.0 nm ( $\Delta P$ ). Calibration graph relating  $\Delta P$  at the chosen wavelength couples to the corresponding concentrations of GEM was constructed, and the corresponding regression equation was computed.

### 2.5.1.5. For bivariate spectrophotometric method.

A concentration series of the acid degradation products was prepared as well. Accurately measured volumes from its working solution were transferred separately into a series of 10-mL volumetric flasks and diluted to the mark with methanol to obtain concentrations from 2 to  $12 \mu\text{g mL}^{-1}$ . The Zero-order spectrum of each dilution was recorded against methanol as blank. The absorbance of GEM and its acid degradation products were measured at 255.0 nm and 277.0 nm for each dilution separately, and then the absorbance at the selected wavelengths were plotted against the corresponding concentrations and the regression equations were then computed.

## 2.5.2. Laboratory prepared mixtures

Laboratory synthetic mixtures containing GEM and different percentages of its degradation product were prepared by transferring aliquot portions (1 – 9 mL) of the GEM working solution in a concentration of ( $10 \mu\text{g mL}^{-1}$ ) into a series of 10-mL measuring flasks. Different portions of the acid degraded solution its concentration is  $10 \mu\text{g mL}^{-1}$  were also added to prepare different mixtures containing 10 - 90% of the degradation products then the volumes were made up with methanol.

## 2.5.3. Application to pharmaceutical preparation

Ten Factive<sup>®</sup> tablets were powdered finely, a weight equivalent to ~ 100 mg GEM was transferred accurately into a 100-mL volumetric flask and sonicated for ~20 min with about 50 mL methanol, followed by filtration through filter paper then the volume was completed with methanol to 100 mL. Further dilutions were applied with methanol in order to reach the linearity rang. The general procedures were followed and the concentration of GEM was calculated from its corresponding regression equations.

## 3. RESULTS AND DISCUSSION

The focus of the present work was to develop accurate, specific, and sensitive stability indicating methods for the determination of GEM in pure form and in pharmaceutical formulation in presence of its potential acid degradation products.

### 3.1. Separation and identification of degradation products

Accelerated stability studies were applied to GEM to explore its inherent stability characteristics and it was found that GEM is susceptible to hydrolysis under acidic conditions. The expected scheme of acid degradation of gemifloxacin may be illustrated as shown in **Scheme (1)**. The structure of the acid-induced degradation products was confirmed using mass spectral analysis as shown in **Figure (2)**. The zero-order absorption spectra of GEM and its acid degradation products show severe overlapping, **Figure (3)**, which interferes with the direct determination of GEM. This problem suggested that these proposed methods are suitable method for the simultaneous determination of GEM in presence of its acid degradation products.





### 3.2. D<sup>1</sup> method:

The obtained spectra showed good resolutions allowing clear determination of GEM at 254.6 nm without any contribution of its degradation products that show zero crossing at the selected wavelength, **Figure (4)**. Linear calibration curves were obtained for the suggested method in concentration range of (2-12  $\mu\text{g mL}^{-1}$ ). The regression equation was calculated and found to be:

$${}^1D_{\text{GEM}} = 0.0585 C + 0.0142 \quad (r = 0.9997).$$

<sup>1</sup>D: Peak amplitude of first derivative. C: Concentration ( $\mu\text{g mL}^{-1}$ ), r: Correlation Coefficient.

### 3.3. <sup>1</sup>DD method:

<sup>1</sup>DD values showed good linearity and reproducibility at a peak 273.0 nm and a trough 284.0 nm without interference from its acid degradation products **Figure (5)**. Linearity of the peak amplitudes of the <sup>1</sup>DD curves at both wavelengths was obtained in the range of 2-12  $\mu\text{g mL}^{-1}$  and the regression equations were computed as shown below:

$${}^1DD = 0.0767 C - 0.0629 \quad (r = 0.9994) \quad (273.0 \text{ nm})$$

$${}^1DD = 0.1014 C - 0.0656 \quad (r = 0.9996) \quad (284.0 \text{ nm})$$

Where,

<sup>1</sup>DD: peak amplitude of first derivative of the ratio spectra.

C : Concentration ( $\mu\text{g mL}^{-1}$ ), r : Correlation coefficient.

### 3.4. Dual wavelength method:

Dual wavelength method copes with the level of interference when the spectra are strongly overlapped as shown in **Figure (3)**. It uses the analytical signal data at two accurately selected wavelengths, thus appropriate selection, thus appropriate selection of wavelength pair is very important. To select the appropriate wavelength pair, the following principles were applied: at the selected wavelengths, the difference in analyte signals had to be linear while the difference in interferent signal is remaining zero with changing the concentration. In addition, the analytical signal obtained from a mixture of the analyte and the interferent should be equal to the sum of the individual signals of the two species. Also, the difference in absorbance due to the analyte signal at the two selected wavelengths should be as large as possible in order to reach good accuracy and sensitivity<sup>[26]</sup>.

To optimize the method, different pairs of wavelengths were selected and tried to show zero absorbance difference for the GEM acid degradation products with maximum difference in absorbance due to GEM, 271.8 nm and 325.0 nm were selected for the determination of GEM, where the acid degradation product shows the same absorbance. A linear Calibration curve was obtained in the range (2-12  $\mu\text{g mL}^{-1}$ ) relating the difference between the absorbance at the two selected wavelengths 271.8 nm and 325.0 nm to the corresponding drug concentrations in presence of acid degradation product and the regression equation was calculated and found to be:

$$\Delta P_{\text{GEM}} = 0.0581 C - 0.0253 \quad (r = 0.9998).$$

Where,  $\Delta P$ : Absorbance difference at the two selected wavelengths (271.8 and 325.0 nm).

C : Concentration ( $\mu\text{g mL}^{-1}$ ), r : Correlation coefficient.

### 3.5. Ratio difference spectrophotometric method:

A smart ratio-difference method has been developed recently with the advantages of minimal data processing and wide range of application, in addition to the advantages of ratio spectra manipulation<sup>[27]</sup>, **Figure (6)**. The linear regression data for the calibration curve showed a good linear relationship over a concentration range of 2 - 12  $\mu\text{g mL}^{-1}$  and the regression equation was computed and found to

$$\Delta P = 0.7113 C + 0.0927 \quad (r = 0.9996). \quad \text{Where,}$$

$\Delta P$ : Absorbance difference at the two selected wavelengths.

C: Concentration ( $\mu\text{g mL}^{-1}$ ), r: Correlation coefficient.

### 3.6. Bivariate Calibration Method

GEM was also determined and resolved from its acid degradation products by using bivariate calibration spectrophotometric method, which is based on a simple mathematical algorithm. The method has been successfully applied to resolve different binary mixtures<sup>[28, 29]</sup>, in which the data is used derives from four linear regression calibration equations, two calibrations for each component at two wavelengths selected using the method of Kaiser<sup>[30]</sup>, which was used for the selection of optimum wavelength set which assured the best sensitivity for the quantitative determination of the studied drug. In order to apply this method, the signals GEM and its acid degradation products located at six wavelengths: 255.0, 270.0, 277.0, 310.0, 320.0, and 340.0 nm were selected.



The determinants of these matrices were calculated as shown in **Table (1)**. The wavelength set (255.0 and 277.0) nm was selected for which the highest matrix determinant value was obtained.

**Table (2)** showed the linear regression calibration formula used for bivariate algorithm.

### 3.7. Method validation

Method validation is an integral part of the analytical procedure; therefore full validation study was done for each proposed method. Analytical figures of merits were applied in agreement with ICH guidelines<sup>[31]</sup> by measuring range, accuracy, precision, repeatability, interday precision, linearity, application of dosage form, application of standard addition technique and specificity. Results obtained are depicted in **Tables (3-5)**.

### 4. CONCLUSION:

The proposed methods are accurate, precise and reproducible. They are stability-indicating methods. These methods complied with the validation guidelines of the International Conference on Harmonization and could be used for purity testing, stability studies, quality control, and routine analysis of GEM either in its bulk powder or in dosage form without noticeable interference from other common dosage form additives. The obtained results were statistically non-significant when they have been compared with those of the reference method.

**Table 1: Application of the method of Kaiser for the selection of the wavelength set for the determination of GEM.**

$\lambda_1/\lambda_2$	255.0	270.0	277.0	310.0	320.0	340.0
255.0	0	1353.56	<b>1563.48</b>	-27.84	87.02	524.82
270.0		0	538.98	-520.26	-531.05	-217.23
277.0			0	-589.86	-648.06	-459.9
310.0				0	44.37	206.19
320.0					0	191.94
340.0						0

**Table 2 : Linear regression calibration formulae used for the bivariate algorithm.**

Component	Calibration equations	
	$\lambda_1=255.0\text{nm}$	$\lambda_2=277.0\text{nm}$
<b>Gemifloxacin</b>	A= 0.0500C + 0.0163 r= 0.9992.	A= 0.0822C -0.0378 r=0.9992
<b>Acid degradation products</b>	A= 0.0234 C + 0.0151 r = 0.9992	A= 0.0072 C + 0.0041 r = 0.9997

A =Absorbance at the selected wavelength.

C = Concentration in  $\mu\text{g mL}^{-1}$ . r = Correlation coefficient.



**Table 3: Results of validation parameters of the responses and the regression equations obtained by the proposed methods**

Validation parameters	D <sup>1</sup> -method 254.6 nm	<sup>1</sup> DD-method		Dual-wavelength method	Ratio-difference method	Bivariate method	
		273.0 nm	284.0 nm			255.0nm	277.0nm
Accuracy ( mean ± % RSD)	99.67 ± 0.799	99.91 ± 0.829	100.01±0.304	100.29 ± 1.107	99.97 ± 0.637	99.87 ± 1.254	
Specificity ± % RSD	99.67 ± 0.689	100.32 ±0.796	99.75 ± 0.730	99.53 ± 0.399	101.23 ±1.360	100.14 ± 1.533	
Range (µg mL <sup>-1</sup> )	2.0 -12.0						
Slope	0.0585	0.0767	0.1014	0.0581	0.7113	0.0500	0.0822
Intercept	0.0142	-0.0629	-0.0656	-0.0253	0.0927	0.0163	- 0.0378
Correlation coefficient (r)	0.9997	0.9994	0.9996	0.9998	0.9996	0.9996	0.9996
Precision	Repeatability*	0.381	0.276	0.720	0.215	0.562	1.102
	Intermediate Precision**	0.714	1.072	0.924	0.326	1.247	1.241
LOD (µg.mL <sup>-1</sup> )***	0.282	0.425	0.348	0.253	0.325	λ <sub>1</sub> = 0.356 , λ <sub>2</sub> =0.355	
LOQ (µg.mL <sup>-1</sup> )***	0.853	1.288	1.053	0.765	0.984	λ <sub>1</sub> = 1.078 , λ <sub>2</sub> =1.076	

\*The intraday (n = 9), average of three different concentrations repeated three times within the day.

\*\*The interday (n = 9), average of three different concentrations repeated three times in three successive days.

\*\*\*Limit of detection and quantitation are determined via calculations, LOD = (SD of the response/slope) X 3.3; LOQ = (SD of the response/slope) X 10

**Table 4 : Determination of the studied drug in the laboratory prepared (L.P.) mixtures with its degradation products and in tablets by the proposed methods.**

Sample	D <sup>1</sup> -method (n=6) <sup>b</sup>	<sup>1</sup> DD-method		Dual wavelength Method(n= 6) <sup>b</sup>	Ratiodifferencemet hod(n=6) <sup>b</sup>	Bivariate calibration method (n=8) <sup>b</sup>
		273nm(n=8) <sup>b</sup>	284nm(n=7) <sup>b</sup>			
L.P. mixtures (Mean ± SD)	99.67 ± 0.687	100.32 ± 0.799	99.75 ± 0.728	99.53 ± 0.397	101.23 ± 1.363	100.14 ± 1.535
Factive® tablet BN:005 ( Mean ± %RSD)	100.21 ± 1.178	100.10 ± 1.941	100.29 ±1.917	99.03 ± 0.893	99.73± 1.895	99.15 ±1.349
Standard addition (Mean ± %RSD)	100.66 ± 1.010	99.51 ± 1.221	100.04 ± 1.131	99.96 ± 1.116	99.40 ± 0.817	100.21± 1.593

<sup>b</sup> Sets each of 3 replicates



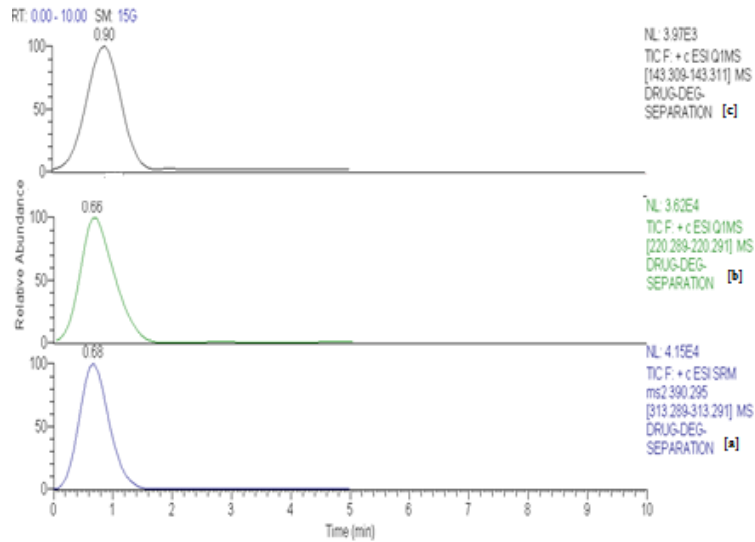


Figure 2 : Chromatogram of LC/MS determination of GEM in presence of its acid degradation products, [a] for pure GEM, [b] for degradation product (I) and [c] for degradation (II).

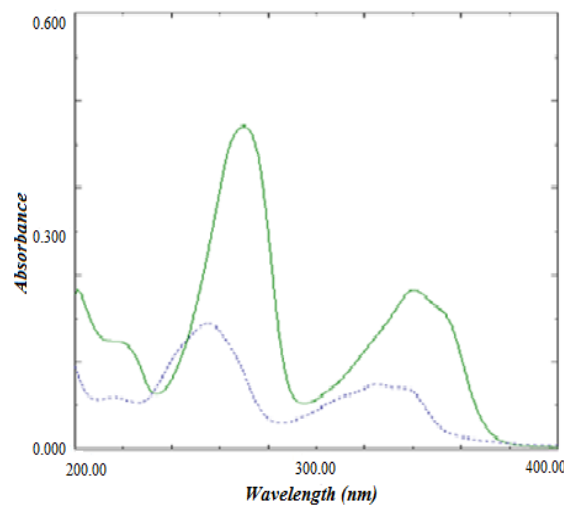


Figure 3 : Zero-order spectra of  $5 \mu\text{g}\cdot\text{mL}^{-1}$  pure GEM (—) and  $5 \mu\text{g}\cdot\text{mL}^{-1}$  acid degradation products (---), using methanol as a solvent.

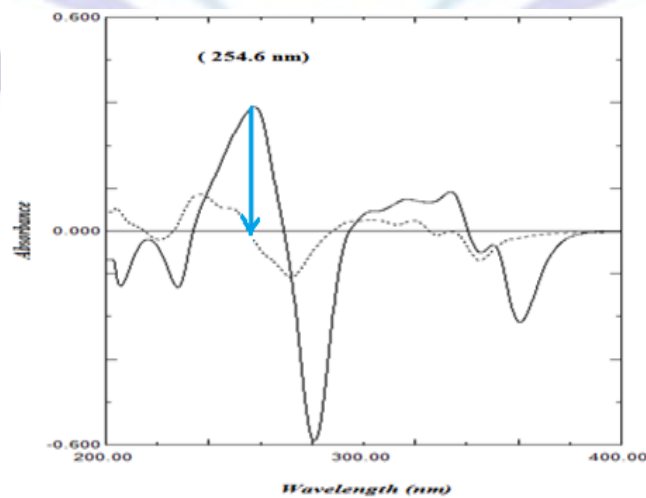


Figure 4 : First derivative absorption spectra of GEM (—) and acid degradation products (---), concentration of each is  $6 \mu\text{g mL}^{-1}$  using methanol as a solvent.



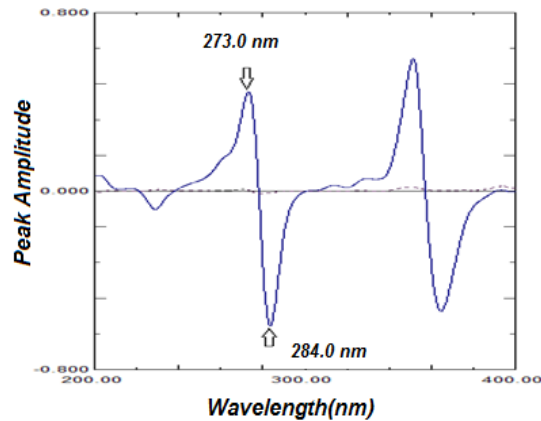


Figure 5 :  $^1\text{DD}$ -Ratio spectra of intact GEM (A) and GEM acid degradation products (B) using a spectrum of  $8\ \mu\text{g mL}^{-1}$  of its degradation product as a divisor, concentration of each is  $6\ \mu\text{g mL}^{-1}$ .

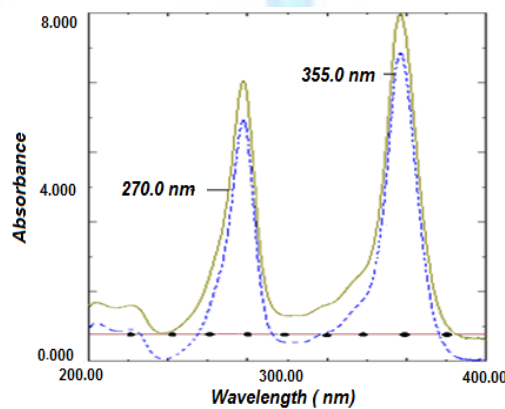


Figure 6 : The ratio spectrum of  $5\ \mu\text{g mL}^{-1}$  intact GEM (—),  $8\ \mu\text{g mL}^{-1}$  GEM acid degradation products (•••••) and a mixture containing  $5\ \mu\text{g mL}^{-1}$  intact GEM and  $5\ \mu\text{g mL}^{-1}$  acid degradates (- - -) using a divisor of  $8\ \mu\text{g mL}^{-1}$  degradates in methanol.

## REFERENCES:

1. Merck index, an encyclopedia of chemicals, drugs and biological, fourteenth edition, USA, 2006.
2. [www.drugbank.ca/drugs/DB01155#pharmacology](http://www.drugbank.ca/drugs/DB01155#pharmacology) 15March2015.
3. S.C. Sweetman, Martindale (The complete drug reference), Thirty –seventh edition, the pharmaceutical press, London 2011.
4. R Rote AMBADAS; P.PINGLE SUNITA; E-Journal of Chemistry 2010,7(S1),S344-S348.
5. Akram M. El-Didamony, Mona O. Abo-Elsoad Journal of Saudi Chemical Society, In Press, Corrected Proof, Available online 21 October 2013.
6. Paim, C. S.; Fuhr, F.; Miron, D. S.; Steppe, M.; Schapoval, E. E. S.\*; . Journal of AOAC International, 2014, **97** (1), 94-98.
7. Gouda, A. A.\*; Amin, A. S.; El-Sheikh, R.; Yousef, A. G.; Journal of Analytical Methods in Chemistry, 2014, **2014** (1), 286379.
8. Zhong, W. Y.\*; Wang, Y.; Huang, B.; Shu, C.; Guangpuxue Yu GuangpuFenxi, 2012, **32** (06), 1570-1574.
9. Roy, B.; Das, A.; Bhaumik, U.; Sarkar, A. K.; Bose, A.; Mukharjee, J.; Chakrabarty, U. S.; Das, A. K.; Pal, T. K., Journal of Pharmaceutical and Biomedical Analysis, 2010, **52** (2), 216-226.
10. Doyle, E.; Fowles, S. E.; McDonnell, D. F.; McCarthy, R.; White, S. A.; Journal of Chromatography, B: Biomedical Applications, 2000, **746** (2), 191-198.



11. Szultka, M.; Krzeminski, R.; Walczak, J.; Jackowski, M.; Buszewski, B., *Biomedical Chromatography*, 2014, **28** (2), 255-264.
12. Raju, B.; Ramesh, M.; Borkar, R. M.; Padiya, R.; Banerjee, S. K.\*; Srinivas, R., *Biomedical Chromatography*, 2012, **26** (11), 1341-1347.
13. Robledo, V. R. and Smyth, W. F., *AnalyticaChimicaActa*, 2008, 623 (2), 221-230
14. Rote, A. R.\*; Pingle, S. P., *Journal of Chromatography, B: Analytical Technologies in the Biomedical and Life Sciences*, 2009, **877** (29), 3719-3723.
15. de Araujo, B. V.; Laureano, J. V.; Grunspan, L. D.; Costa, T. D.; Tasso, L.\*; *Journal of Chromatography, B: Analytical Technologies in the Biomedical and Life Sciences*, 2013, 919-920 (1), 62-66.
16. Rao, R. N.\*; Naidu, C. G.; Prasad, K. G.; Padiya, R.; Agwane, S. B.; HPLC Group, Analytical Chemistry Division, Discovery Laboratory Indian Institute of Chemical Technology, Source: *Biomedical Chromatography*, 2012, 26 (12), 1534-1542.
17. Grunspan, L. D.; Kaiser, M.; Hurtado, F. K.; Costa, T. D.; Tasso, L.\*; Laboratório de Farmacologia e Fisiologia, Curso de Farmacia Universidade de Caxias do Sul, *Chromatographia*, 2012, 75 (5-6), 253-262.
18. Kaiser, M.; Grunspan, L. D.; Costa, T. D.; Tasso, L.\*; Curso Farm., Lab. Fisiol. Farmacol. UCS, 95020-972, Caxias do Sul, RS, Brazil, *Journal of Chromatography, B: Analytical Technologies in the Biomedical and Life Sciences*, 2011, 879 (30), 3639-3644.
19. Rao, R. N.\*; Naidu, C. G.; Prasad, K. G.; Narasimha, R.; Anal. Chem. Div. Indian Inst. Chem. Technol., Tarnaka, Hyderabad, 500 607, India Source: *Biomedical Chromatography*, 2011, 25 (11), 1222-1229.
20. Al-Hadiya, B. M. H.\*; Khady, A. A.; Mostafa, G. A. E.; *Talanta*, 2010, **83** (1), 110-116.
21. Ranjane, P. N.; Gandhi, S. V.\*; Kadukar, S. S.; Bothara, K. G.; *Chromatographia*, 2010, 71 (11-12), 1113-1117.
22. Hyun, M. H.; Han, S. C.; Cho, Y. J.; Jin, J. S.; Lee, W. J., *Biomedical Chromatography*, 2002, 16 (5), 356-360.
23. Lee, W. J.; Hong, C. Y., *Journal of Chromatography*, 2000, 879 (2), 113-120.
24. Hyun, M. H. and Han, S. C. *Journal of Biochemical and Biophysical Methods*, 2002, 54, (1-3), 235-243.
25. Choi, H. J.; Cho, H. S.; Han, S. C.; Hyun, M. H., *Journal of Separation Science*, 2009, 32 (4), 536-541.
26. P. Campins-Falco, F. Blasco Go Mez and F. Bosch-Reig; *Talanta*, 47, 193-202 (1998).
27. Eman S. ElZanfaly, Ahmed S. Saad, Abdelaziz B. Abdelaleem; *Journal Of Pharmaceutical analysis*, Volume 2, Issue 5, 382-385 (October 2012)
28. Lopez-Martinez L., Lopez-de-Alb P.L., Creda-Martin V., (2001). *Analytical letters*, 34(14), 2563.
29. Lopez-de-Alba P.L., Wrobel K., Lopez-Martinez L., Yopez-Murrieta M.L., Amador-Hernandez J., (1997). *Journal of pharmaceutical & Biomedical Analysis*, 16, 349.
30. Massart D.L., Vandeginste B.G.M., Deming S.N., Michotte Y., Kaufman L., (1988). *Chemometrics: a textbook*, Elsevier, Amsterdam, pp.124.
31. International Conference on Harmonization (ICH). ICH Harmonized Tripartite Guideline. Topic Q2(R1). Validation of Analytical Procedures: Text and Methodology; Geneva, Switzerland. (2005).



**Author's Biography:**



**Fatma Mahmoud** is a quality assurance supervisor at VACSERA holding company for biological products and vaccines since 2003. She received the Bachelor degree in pharmaceutical sciences from Cairo University, Egypt, in 2002. Her main areas of research are in Analytical chemistry and pharmaceutical products quality control.

