

## ARTIFICIAL NEURAL NETWORKS: The New Era Of I.T

Harmandeep Singh

Assistant Professor

P.G.Deptt. Of C.sc & I.T

S.G.A.D.College, Khadur Sahib-143117

### ABSTRACT

Artificial neural networks are composed of interconnecting artificial neurons. Artificial neural networks may either be used to gain an understanding of biological neural networks, or for solving artificial intelligence problems without necessarily creating a model of a real biological system. The real, biological nervous system is highly complex: artificial neural network algorithms attempt to abstract this complexity and focus on what may hypothetically matter most from an information processing point of view. Good performance (e.g. as measured by good predictive ability, low generalization error), or performance mimicking animal or human error patterns, can then be used as one source of evidence towards supporting the hypothesis that the abstraction really captured something important from the point of view of information processing in the brain. Another incentive for these abstractions is to reduce the amount of computation required to simulate artificial neural networks, so as to allow one to experiment with larger networks and train them on larger data sets.

The key element of this paradigm is the novel structure of the information processing system. It is composed of a large number of highly interconnected processing elements (neurones) working in unison to solve specific problems. ANNs, like people, learn by example. An ANN is configured for a specific application, such as pattern recognition or data classification, through a learning process. Learning in biological systems involves adjustments to the synaptic connections that exist between the neurones. This is true of ANNs as well.

**KEYWORDS:** Neural networks, Biological systems, Neurons, Artificial Neural Networks

### INTRODUCTION

An Artificial Neural Network (ANN) is an information processing paradigm that is inspired by the way biological nervous systems, such as the brain, process information. The key element of this paradigm is the novel structure of the information processing system. It is composed of a large number of highly interconnected processing elements (neurones) working in unison to solve specific problems. ANNs, like people, learn by example. An ANN is configured for a specific application, such as pattern recognition or data classification, through a learning process. Learning in biological systems involves adjustments to the synaptic connections that exist between the neurones. This is true of ANNs as well.

#### Historical background

Neural network simulations appear to be a recent development. However, this field was established before the advent of computers, and has survived at least one major setback and several eras.

Many important advances have been boosted by the use of inexpensive computer emulations. Following an initial period of enthusiasm, the field survived a period of frustration and disrepute. During this period when funding and professional

support was minimal, important advances were made by relatively few researchers. These pioneers were able to develop convincing technology which surpassed the limitations identified by Minsky and Papert. Minsky and Papert, published a book (in 1969) in which they summed up a general feeling of frustration (against neural networks) among researchers, and was thus accepted by most without further analysis. Currently, the neural network field enjoys a resurgence of interest and a corresponding increase in funding.

The first artificial neuron was produced in 1943 by the neurophysiologist Warren McCulloch and the logician Walter Pitts. But the technology available at that time did not allow them to do too much.

#### Why we use Neural Networks?

Neural networks, with their remarkable ability to derive meaning from complicated or imprecise data, can be used to extract patterns and detect trends that are too complex to be noticed by either humans or other computer techniques. A trained neural network can be thought of as an "expert" in the category of information it has been given to analyse. This expert can then be used to provide projections given new situations of interest and answer "what-if" questions. Other advantages include:

**Adaptive learning:** An ability to learn how to do tasks based on the data given for training or initial experience.

**Self-Organisation:** An ANN can create its own organisation or representation of the information it receives during learning time.

**Real Time Operation:** ANN computations may be carried out in parallel, and special hardware devices are being designed and manufactured which take advantage of this capability.

**Fault Tolerance via Redundant Information Coding:** Partial destruction of a network leads to the corresponding degradation of performance. However, some network capabilities may be retained even with major network damage.

#### Brain, Neural Networks and Computers

Computer simulation of the branching architecture of the dendrites of pyramidal neurons. Neural networks, as used in artificial intelligence, have traditionally been viewed as simplified models of neural processing in the brain, even though the relation between this model and brain biological architecture is debated, as little is known about how the brain actually works.

A subject of current research in theoretical neuroscience is the question surrounding the degree of complexity and the properties that individual neural elements should have to reproduce something resembling animal intelligence.

Historically, computers evolved from the von Neumann architecture, which is based on sequential processing and execution of explicit instructions. On the other hand, the origins of neural networks are based on efforts to model

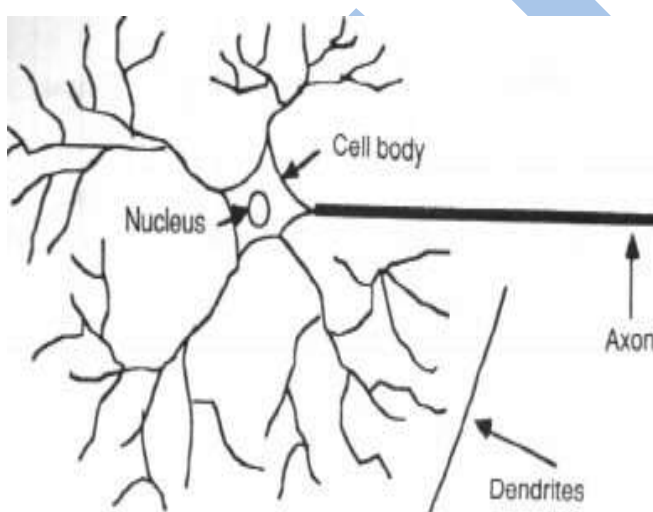
information processing in biological systems, which may rely largely on parallel processing as well as implicit instructions based on recognition of patterns of 'sensory' input from external sources. In other words, at its very heart a neural network is a complex statistical processor (as opposed to being tasked to sequentially process and execute).

Neural coding is concerned with how sensory and other information is represented in the brain by neurons. The main goal of studying neural coding is to characterize the relationship between the stimulus and the individual or ensemble neuronal responses and the relationship among electrical activity of the neurons in the ensemble. It is thought that neurons can encode both digital and analog information.

### Human and Artificial Neurons

#### How the Human Brain Learn?

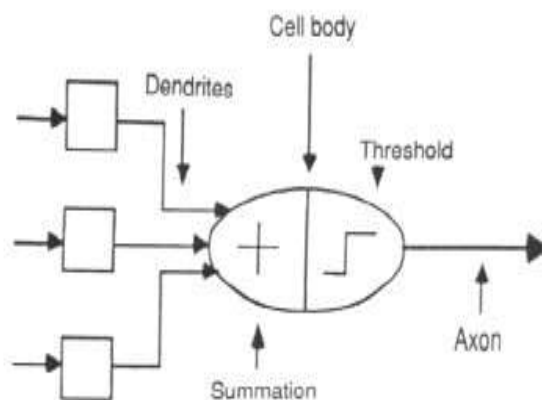
Much is still unknown about how the brain trains itself to process information, so theories abound. In the human brain, a typical neuron collects signals from others through a host of fine structures called *dendrites*. The neuron sends out spikes of electrical activity through a long, thin strand known as an *axon*, which splits into thousands of branches. At the end of each branch, a structure called a *synapse* converts the activity from the axon into electrical effects that inhibit or excite activity from the axon into electrical effects that inhibit or excite activity in the connected neurones. When a neuron receives excitatory input that is sufficiently large compared with its inhibitory input, it sends a spike of electrical activity down its axon..



COMPONENTS OF A NEURON

#### From Human Neurons to Artificial Neurons

We conduct these neural networks by first trying to deduce the essential features of neurones and their interconnections. We then typically program a computer to simulate these features. However because our knowledge of neurones is incomplete and our computing power is limited, our models are necessarily gross idealisations of real networks of neurones.



### THE NEURON MODEL

#### Types of Models

Many models are used in the field, each defined at a different level of abstraction and trying to model different aspects of neural systems. They range from models of the short-term behaviour of individual neurons, through models of how the dynamics of neural circuitry arise from interactions between individual neurons, to models of how behaviour can arise from abstract neural modules that represent complete subsystems. These include models of the long-term and short-term plasticity of neural systems and its relation to learning and memory, from the individual neuron to the system level.

While initially research had been concerned mostly with the electrical characteristics of neurons, a particularly important part of the investigation in recent years has been the exploration of the role of neuromodulators such as dopamine, acetylcholine, and serotonin on behaviour and learning.

Biophysical models, such as BCM theory, have been important in understanding mechanisms for synaptic plasticity, and have had applications in both computer science and neuroscience. Research is ongoing in understanding the computational algorithms used in the brain, with some recent biological evidence for radial basis networks and neural backpropagation as mechanisms for processing data.

Computational devices have been created in CMOS for both biophysical simulation and neuromorphic computing. More recent efforts show promise for creating nanodevices[ for very large scale principal components analyses and convolution. If successful, these efforts could usher in a new era of neural computing[ that is a step beyond digital computing, because it depends on learning rather than programming and because it is fundamentally analog rather than digital even though the first instantiations may in fact be with CMOS digital devices.

#### Architecture

The basic architecture consists of three types of neuron layers: input, hidden, and output. In feed-forward networks, the signal flow is from input to output units, strictly in a feed-forward direction. The data processing can extend over multiple layers of units, but no feedback connections are present. Recurrent networks contain feedback connections. Contrary to feed-forward networks, the dynamical properties of the network are important. In some cases, the activation values of the units undergo a relaxation process such that the network will evolve to a stable state in which these activations do not change anymore.

In other applications, the changes of the activation values of the output neurons are significant, such that the dynamical behavior constitutes the output of the network. Other neural network architectures include adaptive resonance theory maps and competitive networks.

#### **Applications**

##### **Neural Networks in Practice**

Given this description of neural networks and how they work, what real world applications are they suited for? Neural networks have broad applicability to real world business problems. In fact, they have already been successfully applied in many industries.

Since neural networks are best at identifying patterns or trends in data, they are well suited for prediction or forecasting needs including:

**Sales forecasting**

**Industrial process control**

**Customer research**

**Data validation**

**Risk management**

**Target marketing**

But to give you some more specific examples; ANN are also used in the following specific paradigms: recognition of speakers in communications; diagnosis of hepatitis; recovery of telecommunications from faulty software; interpretation of multimeaning Chinese words; undersea mine detection; texture analysis; three-dimensional object recognition; hand-written word recognition; and facial recognition.

##### **Neural networks in Medicine**

Artificial Neural Networks (ANN) are currently a 'hot' research area in medicine and it is believed that they will receive extensive application to biomedical systems in the next few years. At the moment, the research is mostly on modelling parts of the human body and recognising diseases from various scans (e.g. cardiograms, CAT scans, ultrasonic scans, etc.).

Neural networks are ideal in recognising diseases using scans since there is no need to provide a specific algorithm on how to identify the disease. Neural networks learn by example so the details of how to recognise the disease are not needed. What is needed is a set of examples that are representative of all the variations of the disease. The quantity of examples is not as important as the 'quality'. The examples need to be selected very carefully if the system is to perform reliably and efficiently..

##### **Neural Networks in Business**

Business is a diverted field with several general areas of specialisation such as accounting or financial analysis. Almost any neural network application would fit into one business area. There is some potential for using neural networks for business purposes, including resource allocation and scheduling. There is also a strong potential for using neural networks for data mining, that is, searching for patterns implicit within the explicitly stored information in databases. Most of the funded work in this area is classified as proprietary. Thus, it is not possible to report on the full extent of the work going on. Most work is applying neural networks, such as the Hopfield-Tank network for optimization and scheduling.

#### **CONCLUSION**

The computing world has a lot to gain from neural networks. Their ability to learn by example makes them very flexible and powerful. Furthermore there is no need to devise an algorithm in order to perform a specific task; i.e. there is no need to understand the internal mechanisms of that task. They are also very well suited for real time systems because of their fast response and computational times which are due to their parallel architecture. Neural networks also contribute to other areas of research such as neurology and psychology. In this report we study on the ANN, neural network its architecture and its use.

#### **REFERENCES**

- [1] An introduction to neural computing. Aleksander, I. and Morton, H. 2nd edition
- [2] Neural Networks at Pacific Northwest National Laboratory <http://www.emsl.pnl.gov:2080/docs/cie/neural/neural homepage.html>
- [3] Industrial Applications of Neural Networks (research reports Esprit, I.F.Croall, J.P.Mason)
- [4] A Novel Approach to Modelling and Diagnosing the Cardiovascular System <http://www.emsl.pnl.gov:2080/docs/cie/neural/papers2/keller.wcnn95.abs.html>
- [5] Artificial Neural Networks in Medicine <http://www.emsl.pnl.gov:2080/docs/cie/techbrief/NN.techbrief.html>
- [6] Learning internal representations by error propagation by Rumelhart, Hinton and Williams (1986)..
- [7] DARPA Neural Network Study (October, 1987-February, 1989). MIT Lincoln Lab. Neural Networks, Eric Davalo and Patrick Naim
- [8] Rochester, N.; J.H. Holland, L.H. Habit, and W.L. Duda (1956). "Tests on a cell assembly theory of the action of the brain, using a large digital computer